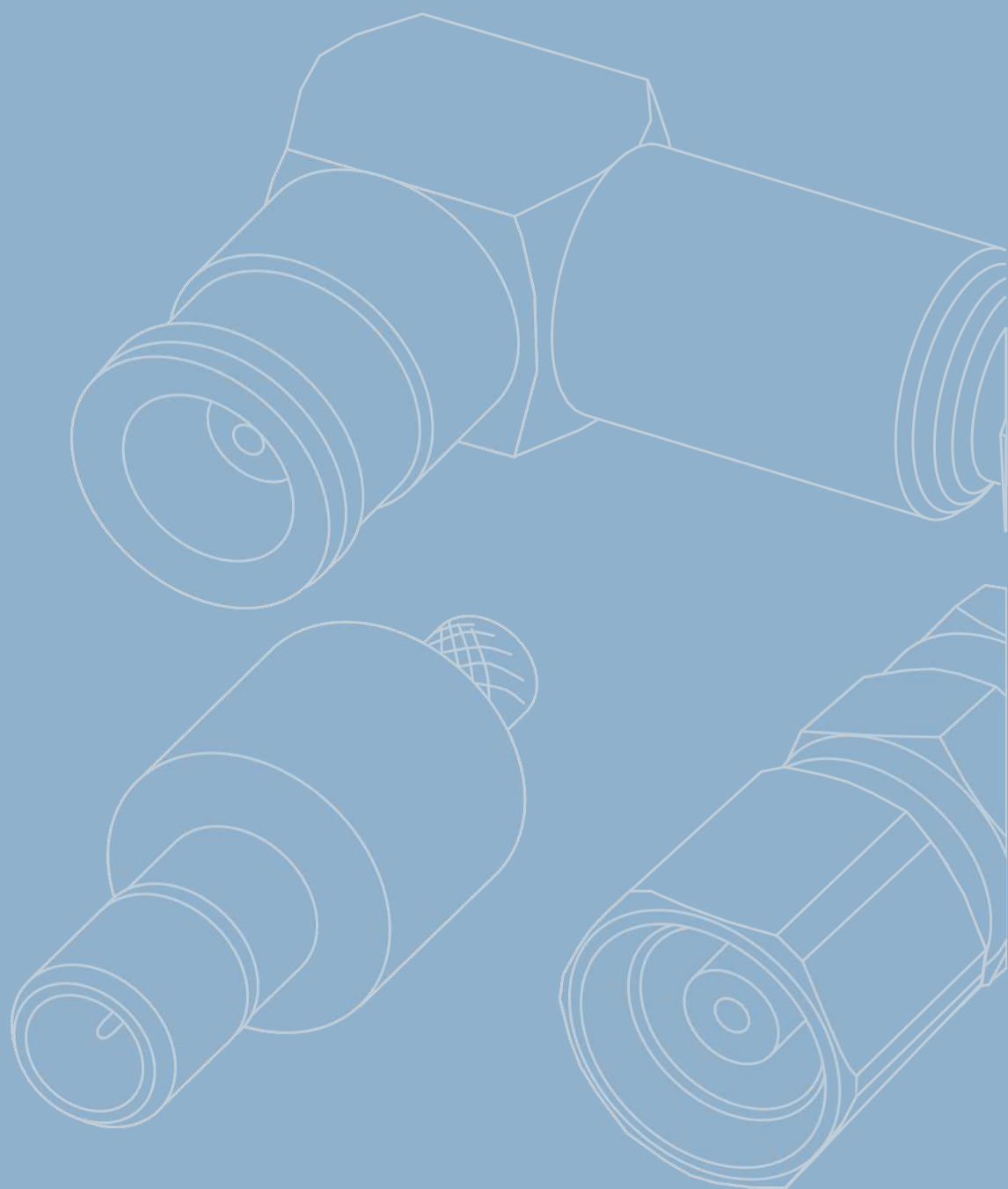


Коаксиальные разъемы и переходы Telegärtner

**SMB/SMC/SMS**

**SMB/SMC/SMS**



Официальный поставщик [www.tt-telecom.ru](http://www.tt-telecom.ru)

Отдел продаж: [market@tt-telecom.ru](mailto:market@tt-telecom.ru)



# 10

## SMB/SMC/SMS SMB/SMC/SMS

<b>10.1</b>	Straight Plug Crimp .....	193	<b>10.1</b>	Kabelstecker Crimp .....	193
<b>10.2</b>	Angle Plug Crimp .....	193	<b>10.2</b>	Kabelwinkelstecker .....	193
<b>10.3</b>	Bulkhead Plug .....	193	<b>10.3</b>	Kabeleinbaustecker .....	193
<b>10.4</b>	Bulkhead Plug Crimp .....	194	<b>10.4</b>	Kabeleinbaustecker Crimp .....	194
<b>10.5</b>	Bulkhead Receptacle, male .....	195	<b>10.5</b>	Einbaustecker .....	195
<b>10.6</b>	Press-In Bulkhead Receptacle, male .....	197	<b>10.6</b>	Einpresstecker .....	197
<b>10.7</b>	Straight Receptacle, male, for Printed Circuits in Press-In Technology .....	197	<b>10.7</b>	Stecker für gedruckte Schaltungen in Einpresstechnik .....	197
<b>10.8</b>	Receptacle, male, for Printed Circuits .....	198	<b>10.8</b>	Anbaustecker für gedruckte Schaltungen .....	198
<b>10.9</b>	Straight PCB Receptacle, male, in SMT and Edge-Mount .....	198	<b>10.9</b>	Stecker in SMT für gedruckte Schaltungen und Edge-Mount .....	198
<b>10.10</b>	Angle Receptacle, male, for Printed Circuits .....	199	<b>10.10</b>	Winkelanbaustecker für gedruckte Schaltungen .....	199
<b>10.11</b>	Straight Jack .....	199	<b>10.11</b>	Kabelbuchse .....	199
<b>10.12</b>	Straight Jack Crimp .....	200	<b>10.12</b>	Kabelbuchse Crimp .....	200
<b>10.13</b>	Angle Jack .....	202	<b>10.13</b>	Kabelwinkelbuchse .....	202
<b>10.14</b>	Angle Jack Crimp .....	203	<b>10.14</b>	Kabelwinkelbuchse Crimp .....	203
<b>10.15</b>	Straight PCB Receptacle, female, in SMT .....	205	<b>10.15</b>	Edge-Mount Buchse in SMT .....	205
<b>10.16</b>	Angled Receptacle for Printed Circuits .....	205	<b>10.16</b>	Winkelbuchse für gedruckte Schaltungen .....	205
<b>10.17</b>	Adaptor .....	206	<b>10.17</b>	Kupplung .....	206
<b>10.18</b>	Bulkhead Adaptor .....	206	<b>10.18</b>	Verbindungsstück .....	206
<b>10.19</b>	Termination, female .....	206	<b>10.19</b>	Abschlusswiderstand .....	206

These connector series offer three different coupling mechanisms: SMB has a snap-on coupling allowing quick but secure connection, and is usable up to 4 GHz. SMC has a threaded coupling for vibration proof installation, and is usable up to 10 GHz. SMS has a slide coupling which is suitable for rack and panel systems, and is usable up to 4 GHz.

The impedance is controlled at 50 Ω for all types. Connector styles are available for flexible, conformable and semi-rigid cables. Versions of these series connectors are available for mounting to printed circuit boards using both thru-hole soldered and thru-hole press-fit techniques, as well as surface mount technology (SMD). Solder and crimp techniques are used to terminate these series to cables. SMB/SMC/SMS connectors find applications in all types of electronic equipment.

Die Steckverbindungen der Serie SMB/SMC/SMS werden mit drei verschiedenen Kupplungsarten angeboten: SMB-Steckverbinder haben Schnapptechnik, die eine schnelle aber sichere Verbindung gewährleistet und bis zu einer Frequenz von 4 GHz einsetzbar sind. SMC-Steckverbinder haben vibrationsbeständige Schraubverbindungen und sind bis zu einer Frequenz von 10 GHz einsetzbar. SMS-Steckverbinder sind Einschubverbindungen, die nur geringe Steck- und Ziehkräfte erfordern und daher besonders für Einschubgehäuse geeignet sind. Sie sind bis zu einer Frequenz von 4 GHz einsetzbar.

Die Steckverbindungen der Serie SMB/SMC/SMS haben einen Wellenwiderstand von 50 Ω. Steckverbindervarianten gibt es für flexible, Semi-Flex- und Semi-Rigid-Kabel. Die Leiterplattensteckverbinder der Serie SMB/SMC/SMS sind als Löt- bzw. Einpresstypen erhältlich. Kabel werden durch Löten oder Crimpen angeschlossen. Die Steckverbinder der Serie SMB/SMC/SMS werden in einer Vielzahl von elektronischen Geräten eingesetzt.

<b>Mechanical Characteristics</b>	<b>Mechanische Eigenschaften</b>
Recommended coupling torque .....	SMC 25-35 Ncm .....
Durability (mating cycles): standard type .....	≥ 100 .....
Durability (mating cycles): MIL type .....	≥ 500 .....
Engagement/Disengagement .....	SMB 14 N typ. ....
Disengagement .....	SMS 10 N typ. ....
Material: spring contacts .....	CuBe2 .....
Material: crimp ferrule .....	Cu .....
Material: serrated lock washer .....	CuSn6 .....
Material: other metal parts .....	CuZn39Pb3 .....
Material: insulators .....	PTFE .....
Material: gaskets .....	.....
Finish: Inner conductor .....	Cu1Ni2Au1.27 .....
Finish outer conductor: Gold (standard; last digit ...1) .....	Cu1Ni2Au0.8 .....
Finish outer conductor: MIL gold (last digit ...2) .....	Cu1Ni2Au1.27 .....
Finish outer conductor: Type for printed circuits (last digit ...7) .....	SnPb8 .....
Finish outer conductor: Telealloy (white bronze) (last digit ...8) .....	CuSnZn3 (Telealloy); Ag2CuSnZn.5 (Optargen) .....
Finish outer conductor: Nickel (last digit ...9) .....	Cu2Ni5 .....
Finish other metal parts: Gold (standard; last digit ...1) .....	Cu2Ni5Au0.2 .....
Finish other metal parts: MIL gold (last digit ...2) .....	Cu1Ni2Au0.8 .....
Finish other metal parts: Nickel (last digit ...9) .....	Cu2Ni5, CuSnZn3 .....
<b>Climatic Characteristics</b>	<b>Thermische und klimatische Eigenschaften</b>
Climatic category acc. to IEC 60068 - 1 .....	.55/155/21 .....
<b>Electrical Characteristics</b>	<b>Elektrische Eigenschaften</b>
Contact resistance inner conductor .....	≤ 5 mΩ .....
Contact resistance outer conductor .....	≤ 2.5 mΩ .....
Insulation resistance .....	≥ 1 GΩ .....
Voltage proof .....	750 V / 50 Hz .....
Impedance .....	50 Ω .....
Return loss flexible cable (straight type) at 1 GHz .....	≥ 20.0 dB .....
Return loss flexible cable (straight type) at 3 GHz .....	≥ 16.5 dB .....
Return loss flexible cable (angle type) at 1 GHz .....	≥ 14.0 dB .....
Return loss flexible cable (angle type) at 3 GHz .....	≥ 12.4 dB .....
Frequency range up to .....	4 GHz SMB/SMS; 10 GHz SMC .....
<b>Standards</b>	<b>Normen</b>
IEC 60 169-9	IEC 60 169-9
IEC 60 169-10	IEC 60 169-10

The Return Loss values shown above correspond to the IEC standard 60 169-9 and 60 169-10 resp. In most cases, the RF connectors from Telegärtner fulfill or exceed these requirements. Depending on the design and cable type, however, particular connectors could deviate from the norm. The exact parameters of individual products are available upon request.

Die oben angeführten Rückflusdämpfungswerte entsprechen der IEC-Norm 60 169-9 bzw. 60 169-10. Die Telegärtner-Steckverbinder erfüllen oder übertreffen in den meisten Fällen diese Normwerte. Je nach Ausführung und Kabeltype können einzelne Steckverbinder jedoch abweichen. Die genauen Parameter der einzelnen Produkte sind auf Anfrage erhältlich.

<b>Finishes</b> .....	Last Digit	Endziffer	.....	<b>Oberflächen-Ausführungen</b>
Type .....				Ausführung
Gold (Standard) .....	1			Gold (Standard)
MIL-gold .....	2			MIL-Gold
Type for printed circuits (tinned solder pins) .....	7		Leiterplatten-Ausführung (verzinnter Lötanschluss)	
Telealloy (white bronze) .....	8			Telealloy
Nickel .....	9			Nickel

The versions with last digits 1 and in some cases 8 and 9 are available as standard. Those with last digits 2 and 7 can be manufactured when a defined minimum quantity is ordered.

Als Standard werden die Typen mit den Endziffern 1 und in zum Teil mit 8 bzw. 9 angeboten. Die Typen mit den Endziffern 2 und 7 können auf Anfrage bei Einhaltung einer Mindestbestellmenge geliefert werden.

### SMB Mating Face

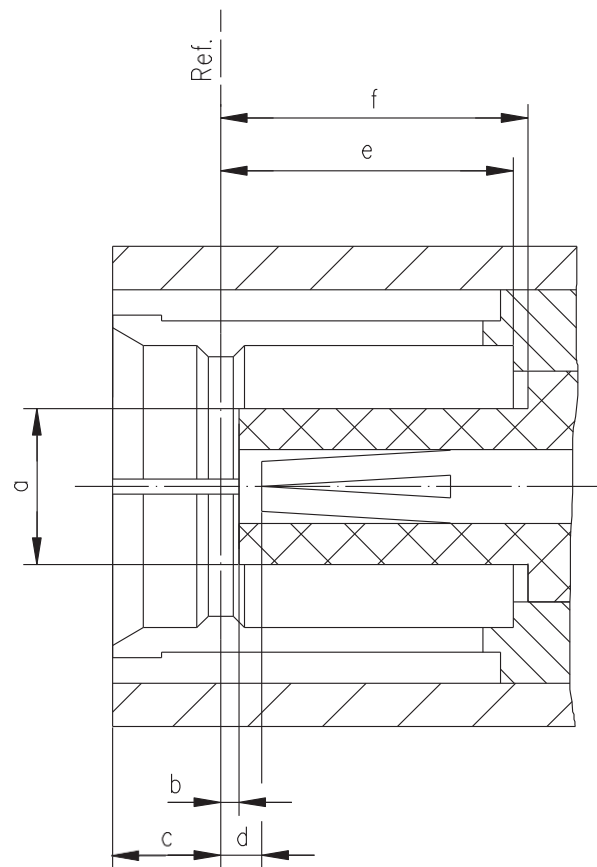
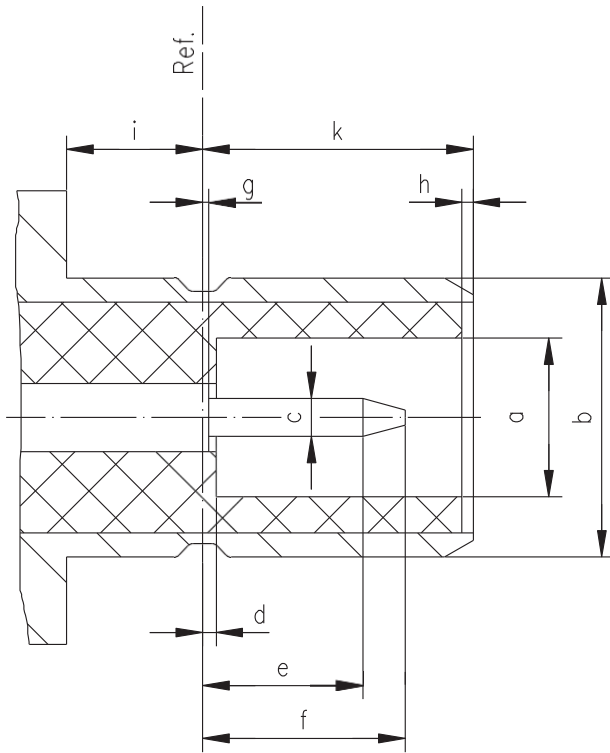
#### SMB-Steckgesicht

Plug

Stecker

Jack

Buchse



	[ inch ]		[ mm ]	
	min.	max.	min.	max.
a	0.082	-	2.08	-
b	0.144	0.146	3.66	3.71
c	0.019	0.021	0.48	0.53
d	-	0.007	-	0.18
e	0.052	-	1.32	-
f	-	0.117	-	2.97
g	-	0.007	-	0.18
h	0.0	-	0.0	-
i	0.065	-	1.65	-
k	0.131	0.141	3.33	3.58

	[ inch ]		[ mm ]	
	min.	max.	min.	max.
a	-	0.081	-	2.06
b	0.007	-	0.18	-
c	-	0.064	-	1.63
d	0.007	0.037	0.18	0.94
e	0.141	-	3.58	-
f	0.141	-	3.58	-

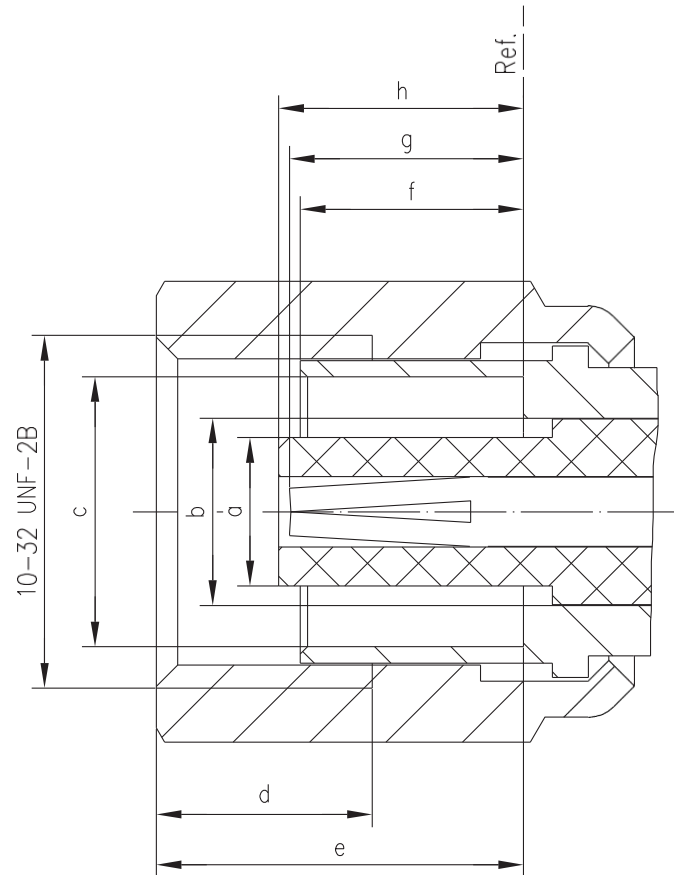
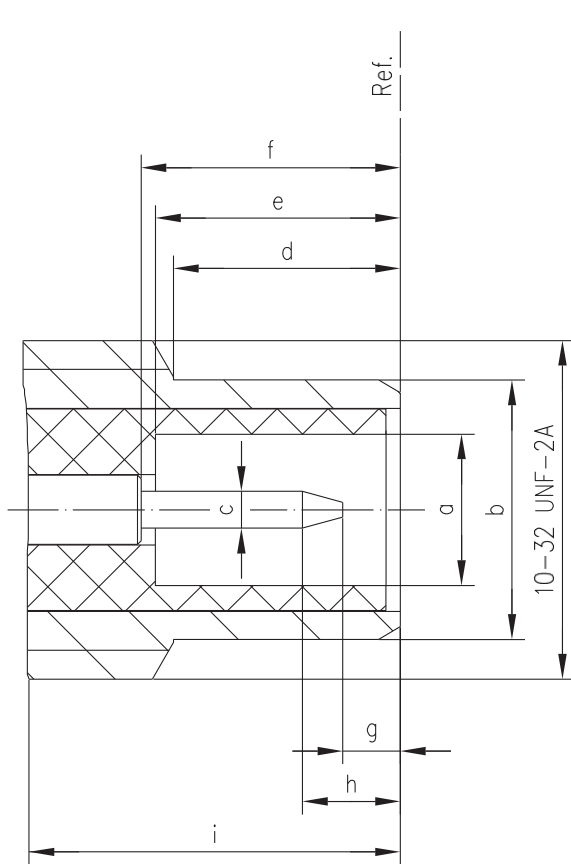
### SMC Mating Face SMC-Steckgesicht

Plug

Stecker

Jack

Buchse



	[ inch ]		[ mm ]	
	min.	max.	min.	max.
a	0.082	-	2.08	-
b	-	0.146	-	3.71
c	0.019	0.021	0.48	0.53
d	0.123	0.133	3.12	3.38
e	0.134	-	3.40	-
f	0.134	-	3.40	-
g	0.024	-	0.61	-
h	-	0.084	-	2.13
i	0.234	-	5.94	-

	[ inch ]		[ mm ]	
	min.	max.	min.	max.
a	-	0.081	-	2.06
b	-	0.121	-	3.07
c	0.147	-	3.73	-
d	0.110	-	2.79	-
e	-	0.233	-	5.92
f	-	0.122	-	3.10
g	0.112	0.134	2.85	3.40
h	-	0.134	-	3.40

### SMS Mating Face

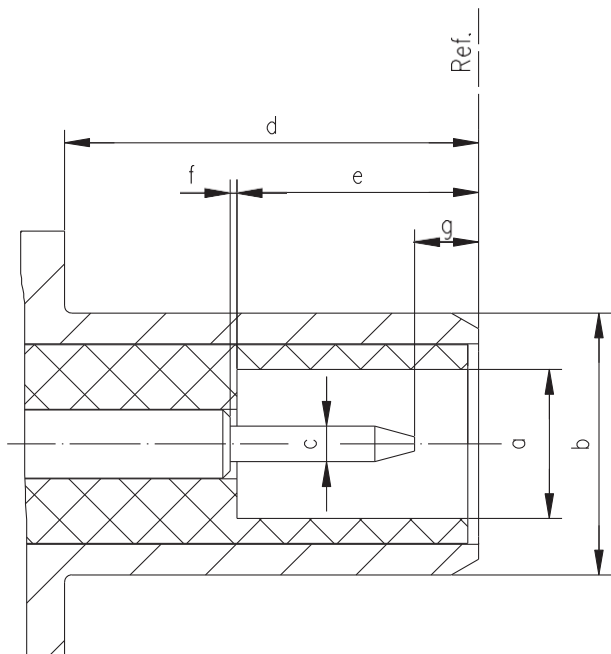
#### SMS-Steckgesicht

Plug

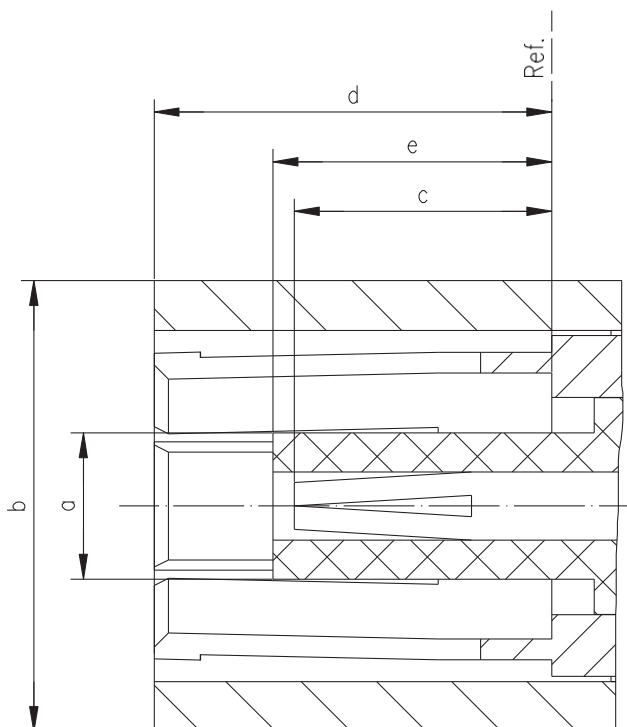
Stecker

Jack

Buchse



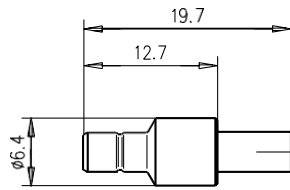
	[ inch ]		[ mm ]	
	min.	max.	min.	max.
a	0.082	0.085	2.08	2.16
b	0.144	0.146	3.66	3.71
c	0.019	0.021	0.48	0.53
d	0.225	-	5.75	-
e	0.134	-	3.40	-
f	0.0	0.007	0.0	0.18
g	0.024	-	0.61	-



	[ inch ]		[ mm ]	
	min.	max.	min.	max.
a	-	0.081	-	2.06
b	-	0.256	-	6.5
c	-	0.134	-	3.4
d	-	0.221	-	5.60
e	-	0.134	-	3.40

### Straight Plug Crimp Kabelstecker Crimp

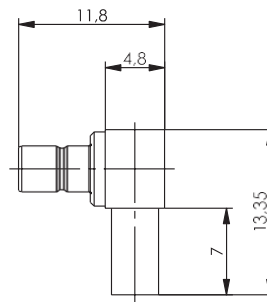
10.1



Order No. Bestell-Nr.	Series Serie	Cable group; cable Kabelgruppe; Kabel	Remarks Anmerkungen	Finish Oberfläche	Assembly Montage	Crimp die Crimpeinsatz
J01160A0401	SMB	G7 (RG-316/U)	crimp/crimp	Gold	C1616	N01003A0009
J01160A0471	SMB	G8 (RD-316)	crimp/crimp	Gold	C1620	N01003A0014

### Angle Plug Crimp Kabelwinkelstecker Crimp

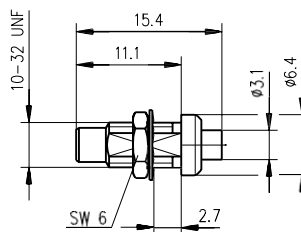
10.2



Order No. Bestell-Nr.	Series Serie	Cable group; cable Kabelgruppe; Kabel	Finish Oberfläche	Assembly Montage	Crimp die Crimpeinsatz
J01160A0558	SMB	G3 (RG-178B/U)	Tealloy (white bronze)	C3413	N01003A0010
J01160A0531	SMB	G7 (RG-316/U)	Gold	C3403	N01003A0009
J01160A0561	SMB	G8 (RD-316)	Gold	C3414	N01003A0014

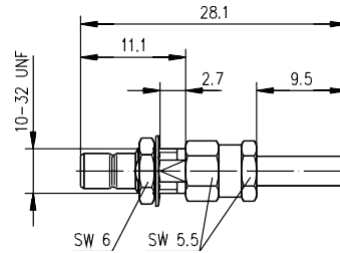
### Bulkhead Plug Kabeleinbaustecker

10.3

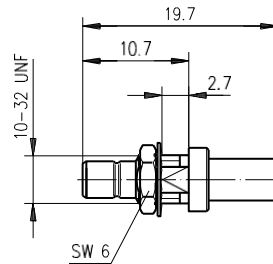


Order No. Bestell-Nr.	Series Serie	Cable group; cable Kabelgruppe; Kabel	Finish Oberfläche	Mount. dim. Einbaumaß	Assembly Montage
J01170A0161	SMC	G11 (UT-85)	Gold	Z24	C19

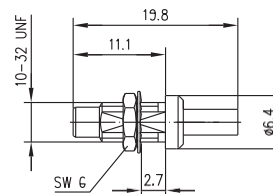
## 10.4

Bulkhead Plug Crimp  
Kabeleinbaustecker Crimp

Order No. Bestell-Nr.	Series Serie	Cable group; cable Kabelgruppe; Kabel	Remarks Anmerkungen	Finish Oberfläche	Mount. dim. Einbaumaß	Assembly Montage	Crimp die Crimpeinsatz
J01160A0091	SMB	G3 (RG-178B/U)	solder/crimp löt/crimp	Gold	Z24	C1413	N01003A0010
J01160A0101	SMB	G7 (RG-316/U)	solder/crimp löt/crimp	Gold	Z24	C1403	N01003A0010
J01160A0111	SMB	G8 (RD-316)	solder/crimp löt/crimp	Gold	Z24	C1414	N01003A0014



Order No. Bestell-Nr.	Series Serie	Cable group; cable Kabelgruppe; Kabel	Remarks Anmerkungen	Finish Oberfläche	Mount. dim. Einbaumaß	Assembly Montage	Crimp die Crimpeinsatz
J01160A0381	SMB	G3 (RG-178B/U)	crimp/crimp	Gold	Z24	C1617	N01003A0010
J01160A0391	SMB	G7 (RG-316/U)	crimp/crimp	Gold	Z24	C1616	N01003A0009
J01160A0398	SMB	G7 (RG-316/U)	crimp/crimp	Tealloy (white bronze)	Z24	C1616	N01003A0009
J01160A0399	SMB	G7 (RG-316/U)	crimp/crimp	Nickel	Z24	C1616	N01003A0009
J01160A0321	SMB	G8 (RD-316)	crimp/crimp	Gold	Z24	C1620	N01003A0014

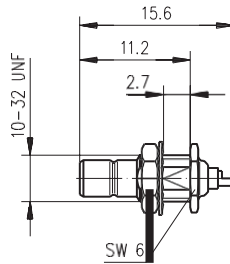


Order No. Bestell-Nr.	Series Serie	Cable group; cable Kabelgruppe; Kabel	Remarks Anmerkungen	Finish Oberfläche	Mount. dim. Einbaumaß	Assembly Montage	Crimp die Crimpeinsatz
J01170A0151	SMC	G3 (RG-178B/U)	crimp/crimp	Gold	Z24	C1617	N01003A0010

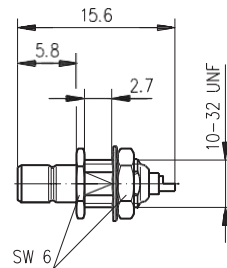


Bulkhead Receptacle, male  
Einbaustecker

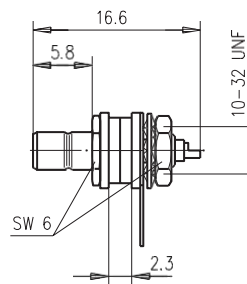
10.5



Order No. Bestell-Nr.	Series Serie	Remarks Anmerkungen	Finish Oberfläche	Mount. dim. Einbaumaß
J01160A0031	SMB	rear mounting Einbau von hinten	Gold	Z24



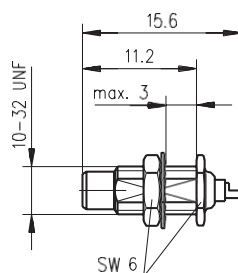
Order No. Bestell-Nr.	Series Serie	Remarks Anmerkungen	Finish Oberfläche	Mount. dim. Einbaumaß
J01160A0021	SMB	front mounting Einbau von vorne	Gold	Z24



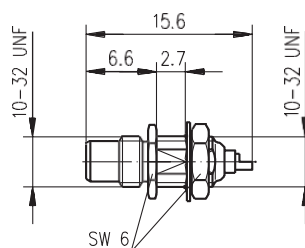
Order No. Bestell-Nr.	Series Serie	Remarks Anmerkungen	Finish Oberfläche	Mount. dim. Einbaumaß
J01160A0271	SMB	front mounting with insulating washers Einbau von vorne mit Isolierscheiben	Gold	Z45

10.5

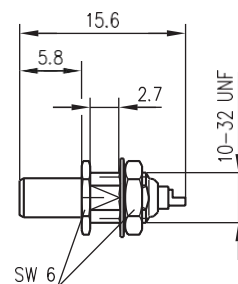
10.5

Bulkhead Receptacle, male  
Einbaustecker

Order No. Bestell-Nr.	Series Serie	Remarks Anmerkungen	Finish Oberfläche	Mount. dim. Einbaumaß
J01170A0011	SMC	rear mounting Einbau von hinten	Gold	Z24



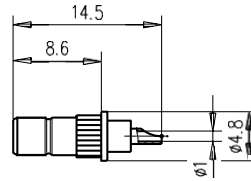
Order No. Bestell-Nr.	Series Serie	Remarks Anmerkungen	Finish Oberfläche	Mount. dim. Einbaumaß
J01170A0001	SMC	front mounting Einbau von vorne	Gold	Z24



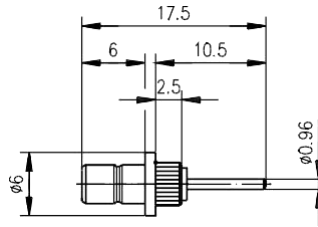
Order No. Bestell-Nr.	Series Serie	Remarks Anmerkungen	Finish Oberfläche	Mount. dim. Einbaumaß
J01180A0031	SMS	front mounting Einbau von vorne	Gold	Z24

Press-In Bulkhead Receptacle, male  
Einpresstecker

10.6



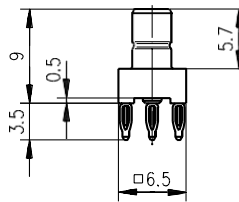
Order No. Bestell-Nr.	Series Serie	Remarks Anmerkungen	Finish Oberfläche	Mount. dim. Einbaumaß
J01160A0341	SMB	rear mounting Einbau von hinten	Gold	Z44
J01160A0349	SMB	rear mounting Einbau von hinten	Nickel	Z44



Order No. Bestell-Nr.	Series Serie	Remarks Anmerkungen	Finish Oberfläche	Mount. dim. Einbaumaß
J01160A0449	SMB	front mounting Einbau von vorne	Nickel	Z44

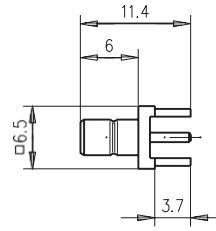
Straight Receptacle, male, for Printed Circuits in Press-In Technology  
Stecker für gedruckte Schaltungen in Einpresstechnik

10.7

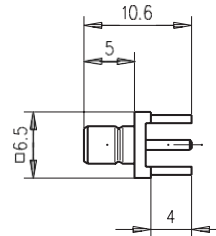


Order No. Bestell-Nr.	Series Serie	Remarks Anmerkungen	Finish Oberfläche	Mount. dim. Einbaumaß
J01160A0431	SMB	Further technical information on request Weitere technische Informationen auf Anfrage	Gold	Z78

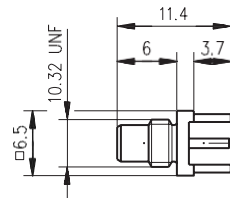
10.8

**Receptacle, male, for Printed Circuits**  
**Anbaustecker für gedruckte Schaltungen**


Order No. Bestell-Nr.	Series Serie	Finish Oberfläche	Mount. dim. Einbaumaß
J01160A0211	SMB	Gold	Z25

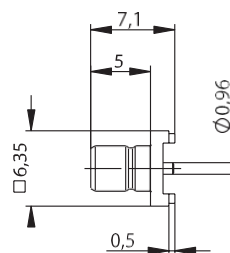


Order No. Bestell-Nr.	Series Serie	Finish Oberfläche	Mount. dim. Einbaumaß
J01160A0311	SMB	Gold	Z25

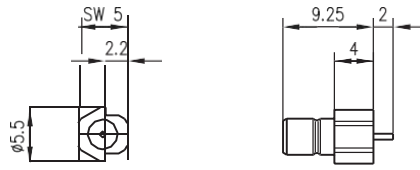


Order No. Bestell-Nr.	Series Serie	Finish Oberfläche	Mount. dim. Einbaumaß
J01170A0131	SMC	Gold	Z25

10.9

**Straight PCB Receptacle, male, in SMT and Edge-Mount**  
**Stecker in SMT für gedruckte Schaltungen und Edge-Mount**


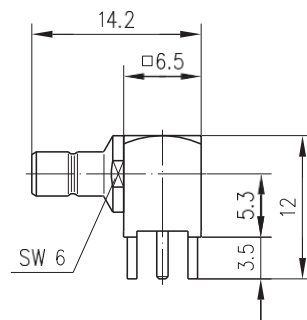
Order No. Bestell-Nr.	Series Serie	Finish Oberfläche	Mount. dim. Einbaumaß
J01160A0421	SMB	Gold	Z72



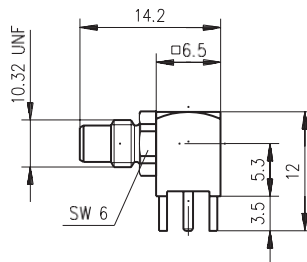
Order No. Bestell-Nr.	Series Serie	Remarks Anmerkungen	Finish Oberfläche	Mount. dim. Einbaumaß
J01160A0501	SMB	Edge-Mount-Type	Gold	Z94

**Angle Receptacle, male, for Printed Circuits**  
**Winkelanbaustecker für gedruckte Schaltungen**

10.10



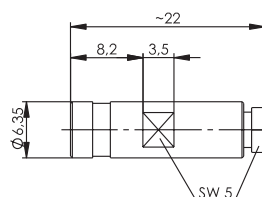
Order No. Bestell-Nr.	Series Serie	Finish Oberfläche	Mount. dim. Einbaumaß
J01160A0231	SMB	Gold	Z25
J01160A0238	SMB	Tealalloy (white bronze)	Z25



Order No. Bestell-Nr.	Series Serie	Finish Oberfläche	Mount. dim. Einbaumaß
J01170A0101	SMC	Gold	Z25

**Straight Jack**  
**Kabelbuchse**

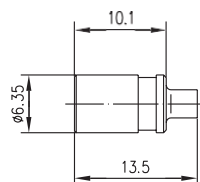
10.11



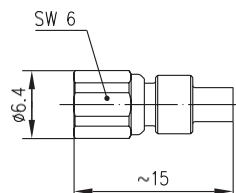
Order No. Bestell-Nr.	Series Serie	Cable group; cable Kabelgruppe; Kabel	Remarks Anmerkungen	Finish Oberfläche	Assembly Montage
J01161A0741	SMB	G7 (RG-316/U)	with pressure sleeve mit Stopfbuchsenverschraubung	Gold	C03

10.11

## 10.11

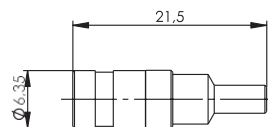
Straight Jack  
Kabelbuchse

Order No. Bestell-Nr.	Series Serie	Cable group; cable Kabelgruppe; Kabel	Remarks Anmerkungen	Finish Oberfläche	Assembly Montage
J01161A0281	SMB	G11 (UT-85)	solder/solder löt/löt	Gold	C25
J01161A0321	SMB	G10 (UT-141)	solder/solder löt/löt	Gold	C25

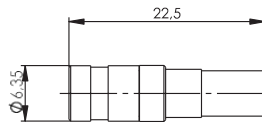


Order No. Bestell-Nr.	Series Serie	Cable group; cable Kabelgruppe; Kabel	Remarks Anmerkungen	Finish Oberfläche	Assembly Montage
J01171A0041	SMC	G11 (UT-85)	crimp/solder crimp/löt	Gold	C06
J01171A0051	SMC	G10 (UT-141)	solder/solder löt/löt	Gold	C25

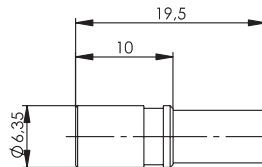
## 10.12

Straight Jack Crimp  
Kabelbuchse Crimp

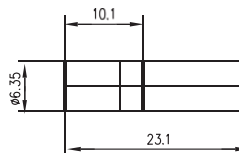
Order No. Bestell-Nr.	Series Serie	Cable group; cable Kabelgruppe; Kabel	Remarks Anmerkungen	Finish Oberfläche	Assembly Montage	Crimp die Crimpeinsatz
J01161A0751	SMB	G3 (RG-178B/U)	solder/crimp löt/crimp	Gold	C1013	N01003A0010
J01161A0761	SMB	G7 (RG-316/U)	solder/crimp löt/crimp	Gold	C1003	N01003A0009
J01161A0768	SMB	G7 (RG-316/U)	solder/crimp löt/crimp	Nickel	C1003	N01003A0009
J01161A0771	SMB	G8 (RD-316)	solder/crimp löt/crimp	Gold	C1014	N01003A0014



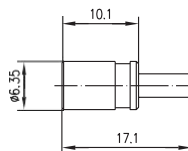
Order No. Bestell-Nr.	Series Serie	Cable group; cable Kabelgruppe; Kabel	Remarks Anmerkungen	Finish Oberfläche	Assembly Montage	Crimp die Crimpeinsatz
J01161A0781	SMB	G13(0.4/2.5); G50(0.45/2.0-3.4); 02YS(ST)CH 0.45/2.0-3.4 Leoni; 02Y (ST) CH 0.45/2.0-3.4 Bedea; 02Y (ST) CY 0.45/2.0-3.4 Siemens; NCX1 391300 0.53/2.45-3.6 Filotex	solder/crimp löt/crimp	Gold	C1004	N01003L1274
J01161A0788	SMB	G13(0.4/2.5); G50(0.45/2.0-3.4); 02YS(ST)CH 0.45/2.0-3.4 Leoni; 02Y (ST) CH 0.45/2.0-3.4 Bedea; 02Y (ST) CY 0.45/2.0-3.4 Siemens; NCX1 391300 0.53/2.45-3.6 Filotex	solder/crimp löt/crimp	Nickel	C1004	N01003L1274



Order No. Bestell-Nr.	Series Serie	Cable group; cable Kabelgruppe; Kabel	Remarks Anmerkungen	Finish Oberfläche	Assembly Montage	Crimp die Crimpeinsatz
J01161A0791	SMB	G12(0.315/1.95-3.7)	crimp/crimp	Gold	C1604	N01003L1274

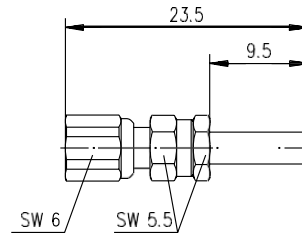


Order No. Bestell-Nr.	Series Serie	Cable group; cable Kabelgruppe; Kabel	Remarks Anmerkungen	Finish Oberfläche	Assembly Montage	Crimp die Crimpeinsatz
J01161A0391	SMB	G1 (RG-58C/U)	crimp/crimp	Gold	C4127	N01003A0039



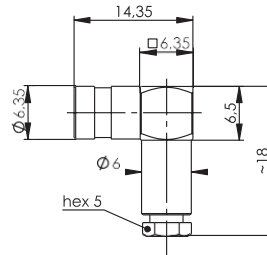
Order No. Bestell-Nr.	Series Serie	Cable group; cable Kabelgruppe; Kabel	Remarks Anmerkungen	Finish Oberfläche	Assembly Montage	Crimp die Crimpeinsatz
J01161A0291	SMB	G3 (RG-178B/U)	crimp/crimp	Gold	C4117	N01003A0010
J01161A0461	SMB	K 01252 D	crimp/crimp	Gold	C4117	N01003A0010
J01161A0691	SMB	G7 (RG-316/U)	crimp/crimp	Gold	C4116	N01003A0009
J01161A0698	SMB	G7 (RG-316/U)	crimp/crimp	Telealloy (white bronze)	C4116	N01003A0009
J01161A0701	SMB	G8 (RD-316)	crimp/crimp	Gold	C4120	N01003A0014

## 10.12

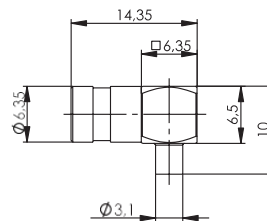
Straight Jack Crimp  
Kabelbuchse Crimp

Order No. Bestell-Nr.	Series Serie	Cable group; cable Kabelgruppe; Kabel	Remarks Anmerkungen	Finish Oberfläche	Assembly Montage	Crimp die Crimpeinsatz
J01171A0001	SMC	G3 (RG-178B/U)	solder/crimp löt/crimp	Gold	C1313	N01003A0010
J01171A0011	SMC	G7 (RG-316/U)	solder/crimp löt/crimp	Gold	C1303	N01003A0009
J01171A0021	SMC	G8 (RD-316)	solder/crimp löt/crimp	Gold	C1314	N01003A0014

## 10.13

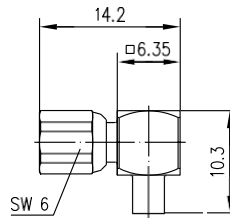
Angle Jack  
Kabelwinkelbuchse

Order No. Bestell-Nr.	Series Serie	Cable group; cable Kabelgruppe; Kabel	Remarks Anmerkungen	Finish Oberfläche	Assembly Montage
J01161A0821	SMB	G7 (RG-316/U)	with pressure sleeve mit Stopfbuchsenverschraubung	Gold	C04



Order No. Bestell-Nr.	Series Serie	Cable group; cable Kabelgruppe; Kabel	Remarks Anmerkungen	Finish Oberfläche	Assembly Montage
J01161A0841	SMB	G11 (UT-85)	solder/solder löt/löt	Gold	C05

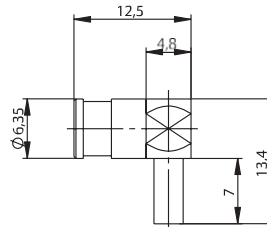




Order No. Bestell-Nr.	Series Serie	Cable group; cable Kabelgruppe; Kabel	Remarks Anmerkungen	Finish Oberfläche	Assembly Montage
J01171A0171	SMC	G11 (UT-85)	solder/solder löt/löt	Gold	C05
J01171A0201	SMC	G10 (UT-141)	solder/solder löt/löt	Gold	C05

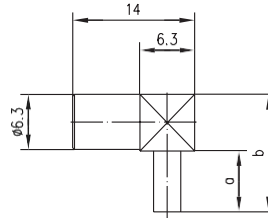
Angle Jack Crimp  
Kabelwinkelbuchse Crimp

10.14

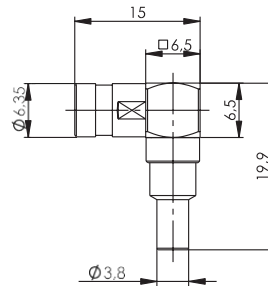


Order No. Bestell-Nr.	Cable group; cable Kabelgruppe; Kabel	Series Serie	Finish Oberfläche	Assembly Montage	Crimp die Crimpeinsatz
J01161A0091	G3 (RG-178B/U)	SMB	Gold	C1113	N01003A0010

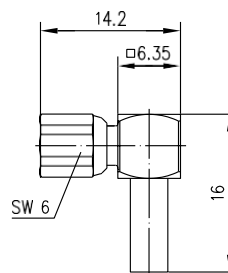
10.14

Angle Jack Crimp  
Kabelwinkelbuchse Crimp

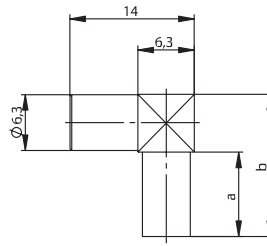
Order No. Bestell-Nr.	Series Serie	Cable group; cable Kabelgruppe; Kabel	Finish Oberfläche	Dimensions Abmessungen	Assembly Montage	Crimp die Crimpeinsatz
J01161A0401	SMB	G3 (RG-178B/U)	Gold	a=7, b=13.35	C3413	N01003A0010
J01161A0661	SMB	G7 (RG-316/U)	Gold	a=7, b=13.5	C3403	N01003A0009
J01161A0668	SMB	G7 (RG-316/U)	Telealloy (white bronze)	a=7, b=13.5	C3403	N01003A0009
J01161A0431	SMB	G8 (RD-316)	Gold	a=7, b=13.35	C3414	N01003A0014
J01161A0438	SMB	G8 (RD-316)	Telealloy (white bronze)	a=7, b=13.35	C3414	N01003A0014
J01161A0261	SMB	G1 (RG-58C/U)	Gold	a=13, b=19.5	C3405	N01003A0005
J01161A0268	SMB	G1 (RG-58C/U)	Telealloy (white bronze)	a=13, b=19.5	C3405	N01003A0005
J01161A0271	SMB	G5 (RG-223/U)	Gold	a=13.5, b=20	C3405	N01003A0005
J01161A0278	SMB	G5 (RG-223/U)	Telealloy (white bronze)	a=13.5, b=20	C3405	N01003A0005



Order No. Bestell-Nr.	Series Serie	Cable group; cable Kabelgruppe; Kabel	Finish Oberfläche	Assembly Montage	Crimp die Crimpeinsatz
J01161A0801	SMB	G7 (RG-316/U)	Gold	C1003	N01003A0009



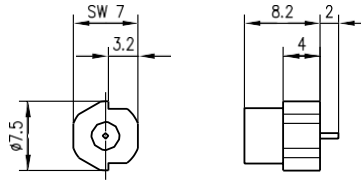
Order No. Bestell-Nr.	Series Serie	Cable group; cable Kabelgruppe; Kabel	Finish Oberfläche	Assembly Montage	Crimp die Crimpeinsatz
J01171A0181	SMC	G7 (RG-316/U)	Gold	C1203	N01003A0009
J01171A0191	SMC	G8 (RD-316)	Gold	C1214	N01003A0014



Order No. Bestell-Nr.	Series Serie	Cable group; cable Kabelgruppe; Kabel	Remarks Anmerkungen	Finish Oberfläche	Dimensions Abmessungen	Assembly Montage	Crimp die Crimpeinsatz
J01161A0831	SMB	G12 (0.315/1.95-3.7)	solder/crimp löt/crimp	Gold	a=9.5, b=16	C1104	N01003L1274

Edge-Mount Jack in SMT  
Edge-Mount Buchse in SMT

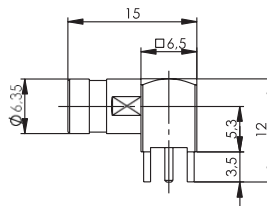
10.15



Order No. Bestell-Nr.	Series Serie	Remarks Anmerkungen	Finish Oberfläche	Mount. dim. Einbaumaß
J01161A0811	SMB	Edge-Mount-Type	Gold	Z95

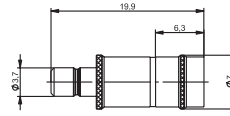
Angled Receptacle for Printed Circuits  
Winkelbuchse für gedruckte Schaltungen

10.16

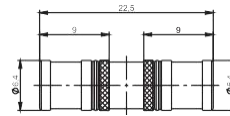


Order No. Bestell-Nr.	Series Serie	Finish Oberfläche	Mount. dim. Einbaumaß
J01161A0811	SMB	Gold	Z25

10.17

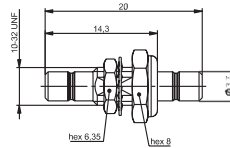
Adaptor  
Kupplung

Order No. Bestell-Nr.	Series Serie	Remarks Anmerkungen	Max. Frequency Max. Frequenz	Return Loss Return Loss
J01162A0021	SMB	m-f Sti-Bu	11 GHz	>30.5 dB/1 GHz



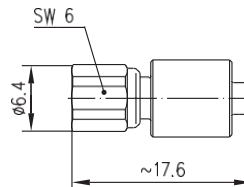
Order No. Bestell-Nr.	Series Serie	Remarks Anmerkungen	Max. Frequency Max. Frequenz	Return Loss Return Loss
J01162A0011	SMB	f-f Bu-Bu	4.0 GHz	>20 dB/1 GHz; 16.5 dB/3 GHz

10.18

Bulkhead Adaptor  
Verbindungsstück

Order No. Bestell-Nr.	Series Serie	Remarks Anmerkungen	Max. Frequency Max. Frequenz	Return Loss Return Loss	Mount. dim. Einbaumaß
J01162A0031	SMB	m-m Sti-Sti	4 GHz	>20 dB/1 GHz; 16.5 dB/3 GHz	Z24

10.19

Termination, female  
Abschlusswiderstand

Order No. Bestell-Nr.	Series Serie	Finish Oberfläche	Max. Frequency Max. Frequenz	Max. Power Max. Leistung	Return Loss Return Loss
J01176A0001	SMC	Gold	6 GHz	1 W	34 dB; 2 GHz