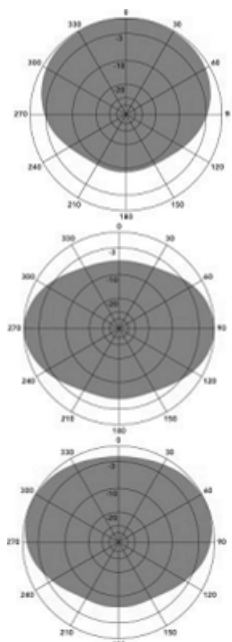
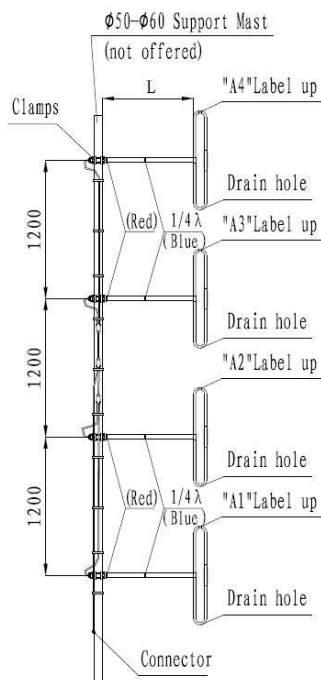


# 144-174 MHz Dipole array antenna 8.15-11.2 dBi 300W



Model	<b>AD4-150-8-300</b>
Frequency (continuous)	144-174 MHz
Gain (dependent on pattern)	8.15-11.2 dBi
Bandwidth	30 MHz
Impedance	50 ohms
VSWR	< 1.5:1
Polarization	Vertical
Maximum input power	300 W
Vertical beamwidth	18°
Connector	N Female or 7/16 DIN Female (option) on harness feed cable
Dimensions (H x D) (max)	4953x900 mm
Weight (antenna + clamps)	13 kg
Rated Wind Velocity	216 km/h
Mounting	On 50-60 mm dia. mast tube
Operating Temperature	-50°C to +70°C
Lightning protection	DC Ground



H-plane gain 11.2dBi  
1/4 wl. spacing from tower

H-plane gain 11.2dBi  
1/2 wl. spacing from tower

H-plane gain 10.6dBi  
3/8 wl. spacing from tower

**Order Information:**

AD4-150-8-300-NF  
AD4-150-8-300-DIN

4-Element Dipole Antenna 144-174 MHz, 8.15-11.2 dBi, 300W with N-female connector  
4-Element Dipole Antenna 144-174 MHz, 8.15-11.2 dBi, 300W with 7-16 DIN female connector

**Note:**

Support mast not included in the package.