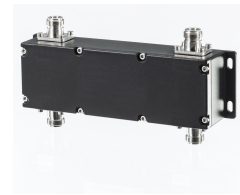


3dB Directional Hybrid Coupler

The CDS3*-380/520-01 hybrid couplers are four-port directional couplers which equally combine two wireless signals and transfer the combined signal to two output ports. The products are designed for wireless services and applications in the frequency band from 380-520MHz.

FEATURES / BENEFITS

- ➔ Supports all TETRA bands in the frequency range 380 - 520 MHz
- ➔ 200 Watt Power Rating
- ➔ High Reliability, Moisture sealed (IP65)
- ➔ N female connectors



CDS3E-380/520-01

Technical Features

GENERAL SPECIFICATIONS

Product Type		Directional Hybrid Coupler
Techn. Application		Indoor
Number of Input Ports		2
Number of Output Ports		2
Connector Type		N female

ELECTRICAL SPECIFICATIONS

Frequency Range	MHz	380 - 520
Impedance	Ohm	50
VSWR / Return Loss	VSWR/dB	1.25/19.1
Intermodulation (IM3)		-150 dBc with 2x43 dBm tones
Isolation min	dB	25
Coupling Value	dB	3.0 ±0.5
Total Input Power	W	200.0

TEMPERATURE SPECIFICATIONS

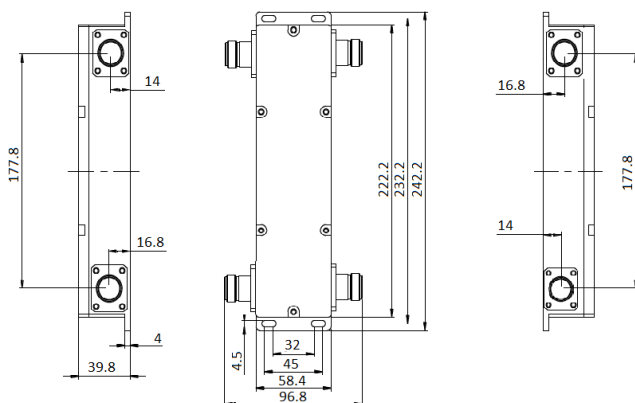
Temperature Range	°C (°F)	-25 to 65 (-13 to 149)
-------------------	---------	------------------------

MECHANICAL SPECIFICATIONS

Height	mm (in)	39.8 (1.57)
Width	mm (in)	96.8 (3.81)
Length	mm (in)	242.2 (5.54)
Weight	kg (lb)	1.22 (2.69)

TESTING AND ENVIRONMENTAL

Environmental Class		IP65
---------------------	--	------



Dimensions in mm



3dB Directional Hybrid Coupler

External Document Links

Notes